



DRICON® ER,  
THE FAST & EFFECTIVE WAY  
TO REMOVE EFFLORESCENCE



FOR MASONRY,  
STONE, GROUT,  
MORTAR JOINTS,  
CONCRETE & CEMENT-  
BASED PRODUCTS

AVAILABLE IN  
750ML & 4L

- QUICKLY CLEANS EFFLORESCENCE
- READY-TO-USE FORMULA
- 100% RECYCLABLE BOTTLES FOR EASY CLEANUP & REDUCED WASTE



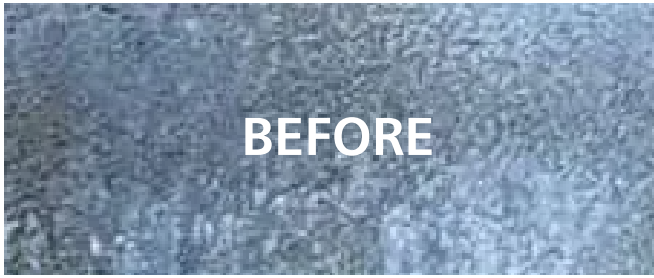
0800 DRICON

WWW.DRICON.CO.NZ





# DRICON® EFFLORESCENCE REMOVER TREATMENT FOR THE REMOVAL OF EFFLORESCENCE SALTS



Dricon® Efflorescence Remover (ER) is a fast-acting cleaner that incorporates a blend of synthetic acids and surfactants that are effective at removing efflorescence from masonry and concrete surfaces. It is a gentle, non-fuming alternative to harsh acids for removing efflorescence. It is formulated to reduce the risk of acid attack on mild steel, stainless steel, copper and brass enabling its powerful blend of active surface agents to be used on many surfaces.

#### **BENEFITS:**

- Quickly cleans efflorescence
- Cleans pre-cast concrete, grout, tile & natural stone
- Ready-to-use formula
- 100% recyclable bottles for easy cleanup & reduced waste

#### **USES:**

- Concrete bricks & pavers
- Mortar joints
- Concrete blocks
- Stone
- Tile Grout
- Poured-in-place & pre-cast concrete
- Other cement-based products

#### **HOW TO USE:**

##### **PREPARATION:**

- Remove surface debris and foreign materials.
- Protect walls and adjacent areas. Saturate adjacent plants, grass & shrubs with water.
- In hot conditions, lightly mist with water prior to application to prevent flash drying. Apply product once water has evaporated.
- Patch test is recommended.

##### **APPLICATION:**

- Apply liberal amount of ER with acid-resistant low-pressure sprayer, 100% plastic hand mister or acid-resistant brush.
- For general use on a wall, start from the bottom and work up.

##### **APPLICATION (Cont.):**

- Once ER contacts the efflorescence foaming will occur.
- Allow 5-10 minute dwell time.
- Agitate or scrub periodically with a stiff brush.
- Check occasionally to ensure it is dissipating.
- Re-apply Dricon ER as needed.
- When finished, flush the surface thoroughly with clean water.
- Regular monitoring & maintenance recommended. Re-apply as needed.

##### **SAFETY & MORE INFO:**

- Visit [DRICON.CO.NZ](http://DRICON.CO.NZ) for Safety and Technical Data Sheets.



**0800 DRICON**  
**WWW.DRICON.CO.NZ**

